

## **Meeting Details**

**Cost:** Free

**Date:** September 12th

**Time:** 8:00 - 9:00 am

**Dropped Pin:** [Field Meeting Location](#). Please enter the field site via Harrington Ave.

**Contact:**

Drew Wolter: (805) 617-8217

Dani Lightle: (530) 865-1107

CCA and DPR credits will be available (pending approval).

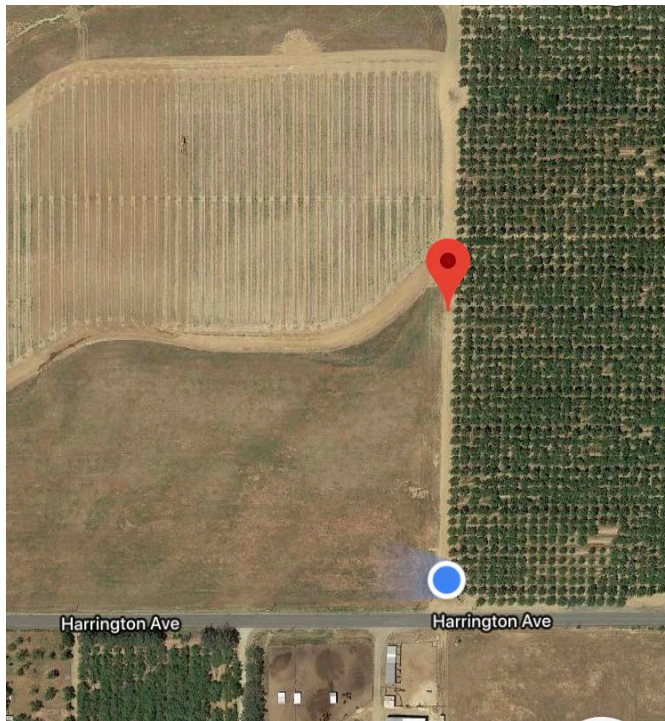


**Rely (low rate) on old paint**

Join Dani Lightle (UCCE Orchards Advisor; Glenn, Tehama, and Butte Counties) and Drew Wolter (UC Junior Specialist Intern and UC Davis Graduate Student) for a field meeting to observe how different trunk protection methods help mitigate herbicide damage to young almond trees. The meetings presentation/talk will be at the Nickels Soil Lab in Arbuckle (pin provided below) on September 12th from 8:00-9:00am. Dani, Drew and/or Franz Niederholzer will be there for drop-in visits until noon if you can't make the morning's formal talk.

### **Project details:**

Different rates of glyphosate (Roundup<sup>®</sup>, etc.), glufosinate (Rely<sup>®</sup>, etc.), or a mix of both were applied to 2nd leaf almond trees with different levels of trunk protection: unpainted, paint (freshly painted or older paint), or cartons. We will walk the site, observe symptoms, and discuss options to protect young trees from herbicide damage. Spoiler: Paint may not be the best option.



**ANR NONDISCRIMINATION AND AFFIRMATIVE ACTION POLICY STATEMENT FOR UNIVERSITY OF CALIFORNIA May, 2015.** It is the policy of the University of California (UC) and the UC Division of Agriculture & Natural Resources not to engage in discrimination against or harassment of any person in any of its programs or activities (Complete nondiscrimination policy statement can be found at <http://ucanr.edu/sites/anrstaff/files/215244.pdf>. Inquiries regarding ANR's nondiscrimination policies may be directed to John I. Sims, Affirmative Action Compliance Officer/Title IX Officer, University of California, Agriculture and Natural Resources, 2801 Second Street, Davis, CA 95618, (530) 750-1397.