

Meeting Announcement

May 2021



University of California

Agriculture and Natural Resources | Cooperative Extension

NICKELS SOIL LAB ANNUAL FIELD DAY

Tuesday, June 1, 2021
Marine Ave, Arbuckle, CA

CCA CE credits (1.5 hours) requested

Please help keep our community safe by practicing social distancing safety precautions listed below*

7:30 am Early Bird Special: Almond density trial. See details on second page of this announcement.

8:30 am — Registration

Thank you! Coffee and Donuts provided by Colusa-Glenn Farm Credit **Thank you!**

Cycle I: 9:20-9:45 am

1) Weed management in young almonds

Brad Hanson, UC Davis Extension Specialist

2) Whole orchard recycling (WOR): soil quality results

Mae Culumber, UCCE Fresno

3) Whole orchard recycling (WOR): fertilization recommendations

Brent Holtz, UCCE San Joaquin Co

4) Managing young almond plantings on vigorous rootstocks

Roger Duncan, UCCE Stanislaus
Franz Niederholzer, UCCE Colusa

Cycle II: 10:45 am -12:10 pm

5) Planting options.

Roger Duncan, UCCE Stanislaus

6) Irrigation efficiency in a drought year: making the most of what you have.

Kevin Greer, Mobile Irrigation Lab, Tehama County RCD

7) Mating disruption for navel orangeworm

Jhalindra Rijal, UC IPM Area Advisor, northern San Joaquin Valley.

8) Orchard cover crops for weed-suppression and other functions.

Steve Haring, UC Davis Plant Sciences Department

12:15 pm – **BBQ Tri-Tip Lunch** by reservation.

Luncheon Speaker. Mel Machado, Blue Diamond Growers, Inc.

Talk Title: “Managing risk and rewards when choosing your plantings.”

After lunch: Equipment Demo: Weed control using heat (not direct flame)
AgroThermal Systems

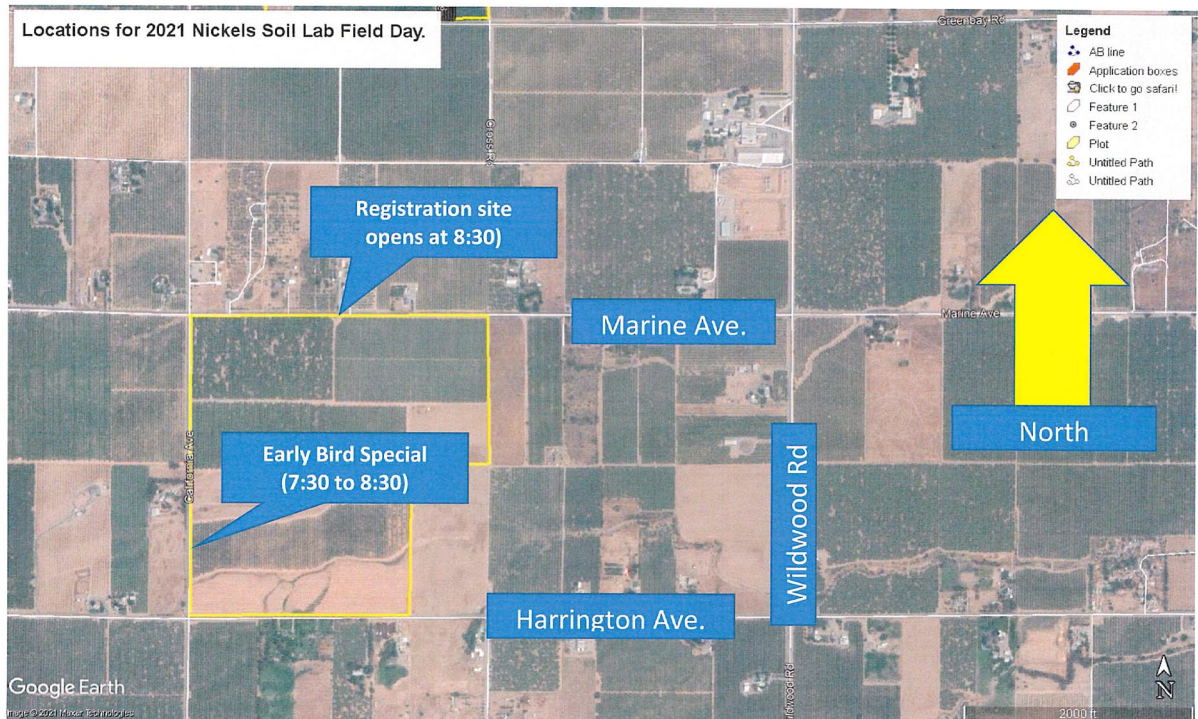
Early Bird Special. Open 7:30-8:30

Nearby the registration tables, but further than a 5 minute walk and so not included in the full program, this trial measures production from Nonpareil(50%), Aldrich (25%) and Kester (25%) almond plantings on Titan (peach/almond hybrid, 5th leaf) or Rootpac-R (almond/plum hybrid, 4th leaf) at 12', 14', 16', or 18' tree spacing. All row spacings = 21'. Research reports from 2020 will be available. There will be a very brief intro to the planting at 7:30 and then it's an "open house" with trial maps available with signs showing what is planted where.

There will be no refreshments or coffee at this location.

*Please help our community stay safe by:

- Staying home if you feel sick.
- Wearing a mask if you stand closer than 6' from anyone who doesn't live at your house.
- Keeping your distance (6') from anyone who doesn't live at your house.
- Use the hand sanitizer stations available at the registration and coffee service.



LUNCHEON RESERVATION FORM

Lunch Benefits Pierce High School FFA Program

Cost: \$20.00 per person

Make checks payable to: Pierce High School

Mail to: Cooperative Extension
P.O. Box 180
Colusa, CA 95932

Or, pay at the door

Name:		
Address:		
City:	State:	Zip:
Email:		Phone:
Name(s) of Attendees(s):		
Total Amount Enclosed:		\$

Please return this form & your check by May 31st or pay at the door.