

New Directions in Prune Growing: 2022 Prune Research tour

Location : Sutter, Yuba, Butte, Tehama, and Glenn Counties.

Time : 8:30 AM Wednesday April 13 to 1:30 pm Thursday April 14.

Motel: Hampton Inn and Suites 520 Adobe Road Red Bluff, California (530) 529-4178 or www.redbluffsuiets.hamptoninn.com (book ASAP for the best possible rate)

Contact: Franz Niederholzer (530) 218-2359 or Luke Milliron (530) 822-6999

Sponsors: California Prune Board and Sunsweet Growers.

Day 1, Wednesday, April 13

Dress Appropriately: NWS predicts: A 40 percent chance of showers. Partly sunny, with a high near 62. South southeast wind 9 to 14 mph, with gusts as high as 21 mph. New precipitation amounts of less than a tenth of an inch possible.

2022 Prune Research Tour starts 8:30 AM at UCCE Sutter-Yuba in Yuba City. Coffee and donuts provided.

8:30 – 10:00: Meet up at UCCE Sutter-Yuba: 142 Garden Hwy, Yuba City, CA for program review/discussion of CPB research program. Short presentations on 1) heat at bloom results, 2) prune fruit growth research, and 3) variety development program

10:00 to 10:30: Travel to Taylor Bros orchards (Turn off to the W. at Paseo Rd & Township Road, Live Oak). Actual field location is: 39.238, -121.715 (**see map below**). Franz Niederholzer & John Taylor will help direct.

10:30 to 12:00: Tour and discussion of:

- higher density prune planting on M29C (12' x 17')
- super high density prune rootstocks and planting. Chuck Fleck, Sierra Gold Nursery, will talk about high density prune rootstock development.

Lunch: on your own in Gridley or Chico. Options include: Raihouse Pub and Grill, and Our Town Pizzeria and Deli in Gridley. In Chico options include: In-N-Out, Chipotle, Sierra Nevada Brewing Company, and Sol Mexican Grill.

Travel to Deseret Farms (Butte prune rootstock trial) in North Chico. 15 minutes from S. Chico or 40 minutes from Gridley. Continue ¼ mile W. past 6100 Wilson Landing Rd, Chico, CA 95973 (Deseret HQ), turning left (S. side of Wilson Landing Rd.) into a gravel parking area: 39.7967, -121.9879 (**see map below**).

2:30 – 4:00: Final tour of Butte prune rootstock trial on the N. side of Wilson Landing Rd. Discussion of Butte and Yuba prune rootstock trials. -- Milliron and Niederholzer, UCCE

Brief discussion of ReTain experiment and prune heat at bloom research – Niederholzer.

4:00 – 4:45: Travel to Hampton Inn in Red Bluff. 520 Adobe Road Red Bluff, California

5:15 – 6:20: Happy hour at hotel conference room (or patio, weather depending). Discussion of: *What does the prune orchard of the future look like?*

6:30 – 8:00: Dinner at the Casa Ramos restaurant which is a short walk from the motel. 2001 Main St, Red Bluff, CA 96080

Day 2 Thursday, April 14

Dress Appropriately: NWS predicts: Showers. High near 60. Southeast wind 16 to 20 mph, with gusts as high as 28 mph. Chance of precipitation is 80%. New precipitation amounts of less than a tenth of an inch possible.

7:30 -- 8:45: Breakfast included with the motel or Starbucks across the street.

8:45 -- 9:00: Travel to first stop. 11790 Tyler Rd, Red Bluff, CA 96080 continuing NW down the driveway all the way to the end. If it's raining, please work to park on gravel. Field at: 40.1416, -122.1903 (**see map below**).

9:00 -- 10:30 Lindauer River Ranch, South of Red Bluff:

- Mechanical hedging trial, Becky Wheeler-Dykes, CSUC researcher
- Sunburn management, group discussion
- Canker management

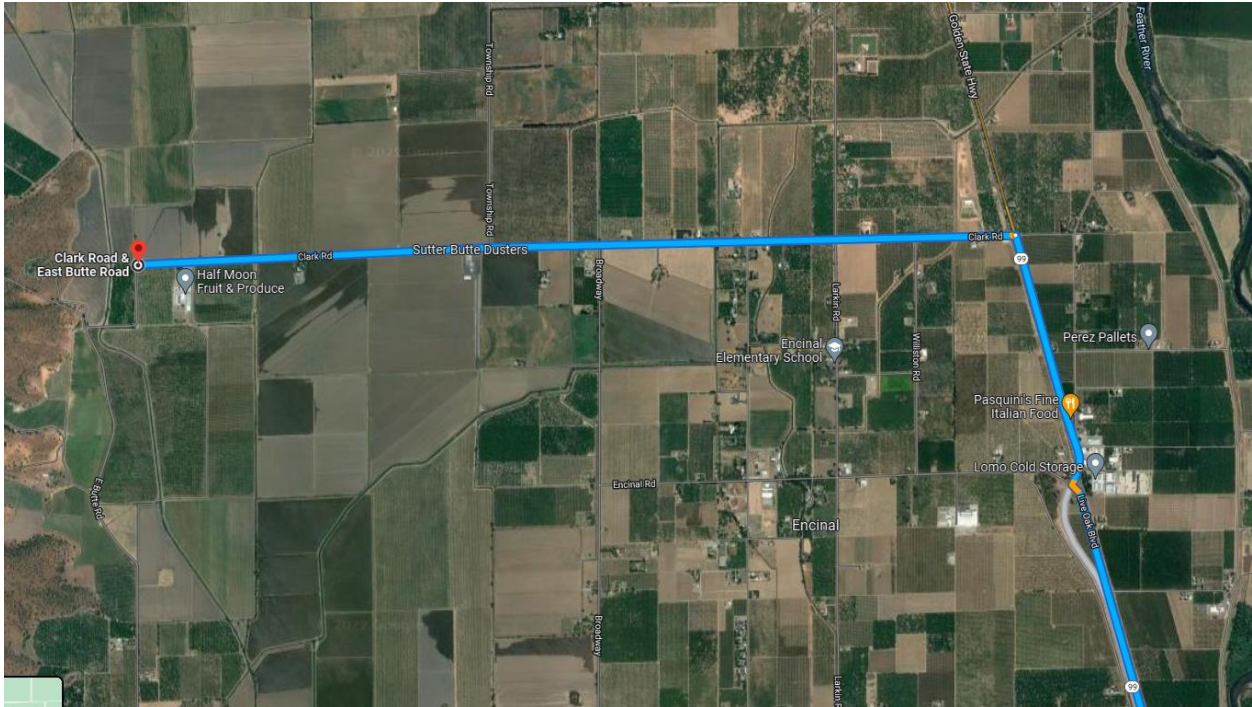
10:30 – 11:15 Drive to Eric Nielsen Enterprises, Inc., east of Orland. 4453 Co Rd O, Orland, CA 95963. Park at: 39.7500, -122.1508 (**see map below**).

11:15 – 12:00: Discussion of long pruning: French on Krymsk 86

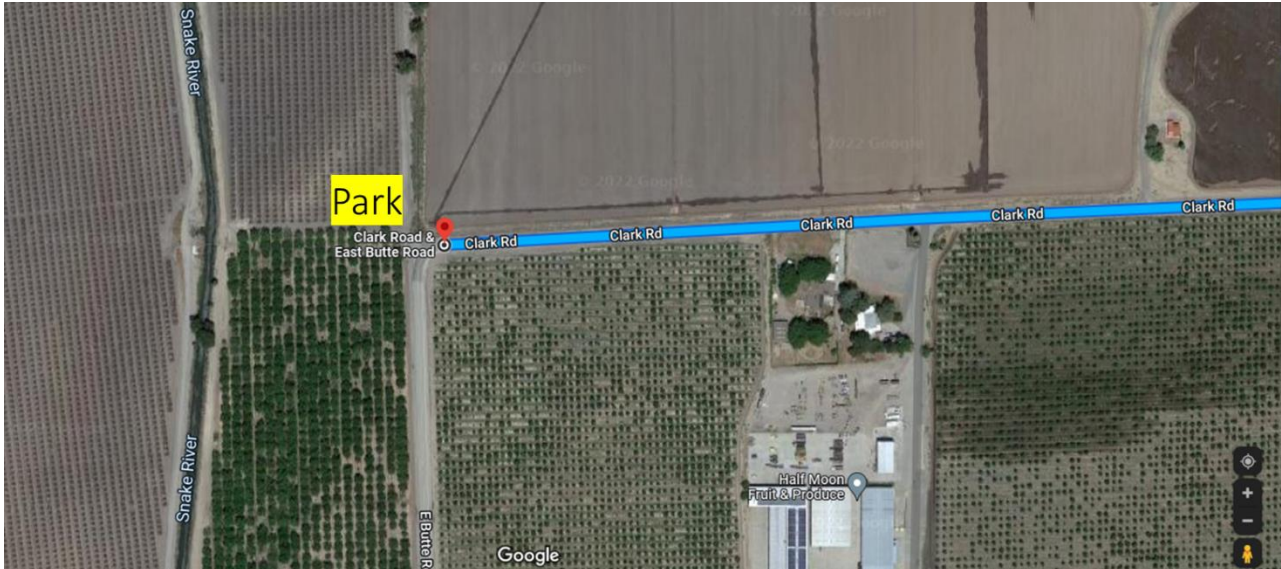
12:15 – 1:30 Lunch at The Hive, Orland. 730 6th St, Orland, CA 95963

2022 prune research tour adjourns. Safe trip home

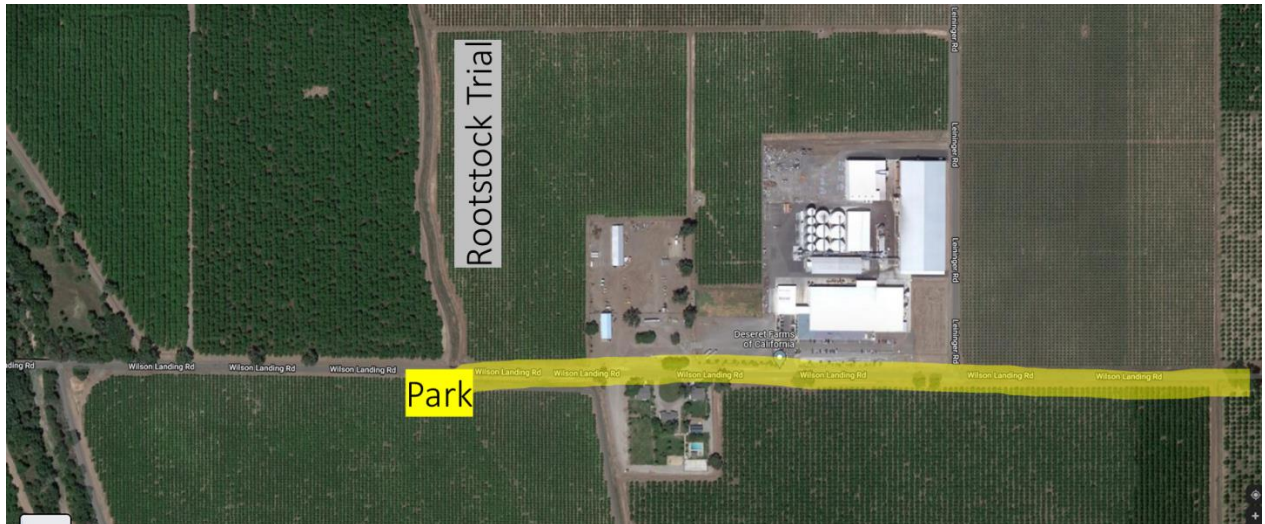
WEDNESDAY 10:00 to 10:30: Travel to Taylor Bros orchards (Traveling N. on Live Oak Blvd and then 99, turn left (W.) on Clark Rd. Clark is the first left after crossing the train tracks and passing Pasquini's. Travel to the end of Clark Rd. Turn right (N.) at Clark Rd. & East Butte Rd. See below for details.



Travel to the end of Clark Rd. Turn right (N.) at Clark Rd. & East Butte Rd instead of continuing on the road which turns 90 degrees to the left (S.) and becomes East Butte Rd. at this same location. Franz Niederholzer & John Taylor will help direct.

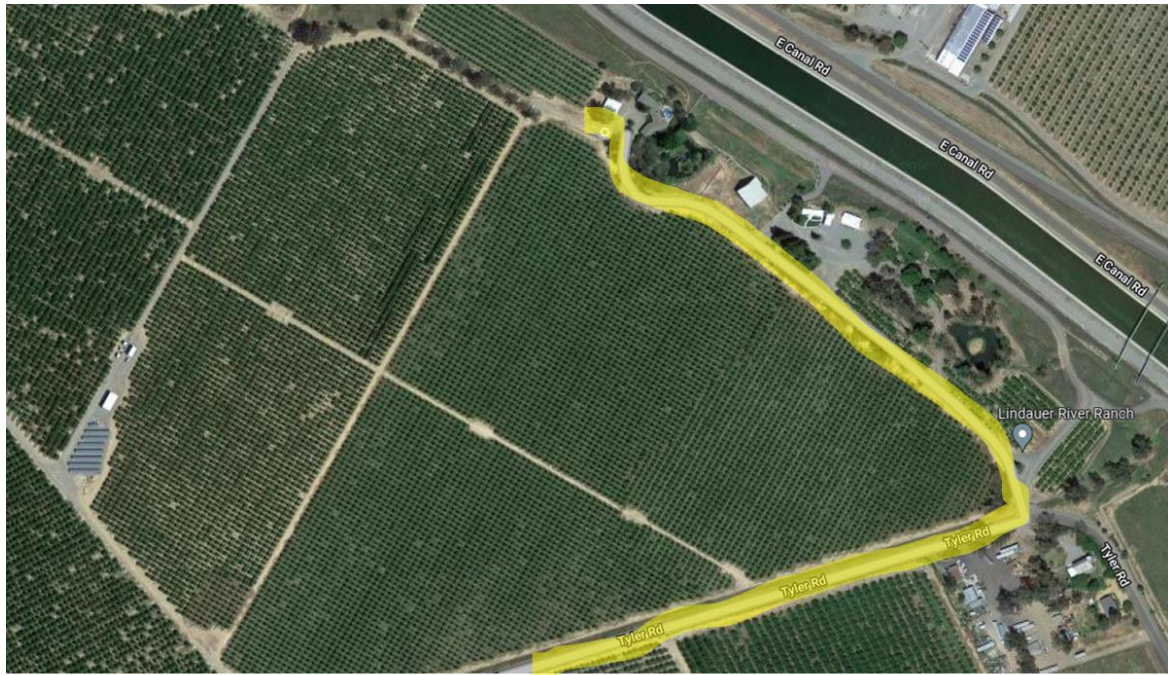


WEDNESDAY by 2:30 PM: Travel to Deseret Farms (Butte prune rootstock trial) in North Chico. 15 minutes from S. Chico or 40 minutes from Gridley. Continue ¼ mile W. past 6100 Wilson Landing Rd, Chico, CA 95973 (Deseret HQ), turning left (S. side of Wilson Landing Rd.) into a gravel parking area: 39.7967, -121.9879



See next page for THURSDAY Morning Directions

THURSDAY Morning First Stop: 8:45 -- 9:00: Travel from hotel to first stop. 11790 Tyler Rd, Red Bluff, CA 96080 continuing NW down the driveway all the way to the end. If there's significant rain, please try to park on gravel. Field at: 40.1416, -122.1903



THURSDAY Morning 2nd Stop: 10:30 – 11:15 Drive to Eric Nielsen Enterprises, Inc., east of Orland. 4453 Co Rd O, Orland, CA 95963. Park at: 39.7500, -122.1508. There are restrooms in both adjacent buildings.

