



University of California

Agriculture and Natural Resources ■ Cooperative Extension

Compost Spreading Demonstration Field Visit

Wednesday, April 6th

9:00am-11:00am

University of California Cooperative Extension and Westside Spreading, LLC will be hosting an in-person drive-by field visit for compost spreading. This field visit is part of the 2020 Healthy Soils Demonstration Project, Evaluation of compost application to processing tomato fields in the Sacramento Valley.

The field visit is open to the public. Amber Vinchesi-Vahl from UCCE and Suellen Witham from Westside Spreading will be at the field to answer questions about the project and to showcase compost application to the field and research plots. There will not be a formal agenda or presentations. Feel free to stop by anytime between 9-11am. Directions to the field site are below.

Please help us keep our community safe by following the following guidelines for the meeting:

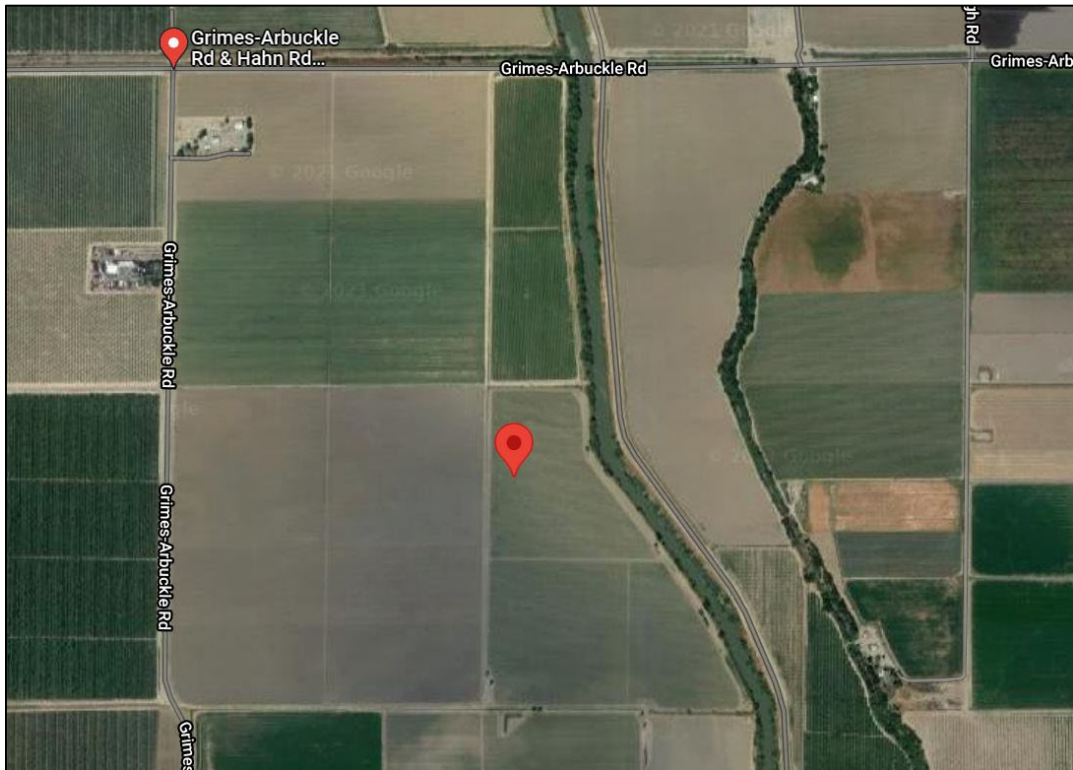
- If you are sick or feeling a little sick, please do not come to the meeting.

No RSVP is required. Please contact Amber Vinchesi-Vahl, acvinchesi@ucanr.edu with questions.



The 2020 Healthy Soils Demonstration Project is part of California Climate Investments, a statewide initiative that puts billions of Cap-and-Trade dollars to work reducing greenhouse gas emissions, strengthening the economy, and improving public health and the environment — particularly in disadvantaged communities.

Location: 39°02'49.7"N 122°00'19.6"W



Directions from Colusa: Take Hwy 20 west towards Williams, CA. Follow for 3.5 miles and then turn left on Lone Star Rd. Follow for 9.6 miles and turn left at the stop sign into Hahn Rd. After 3.4 miles, turn right on Grimes-Arbuckle Rd. The field entrance will be on the left 0.7 miles down the road. Follow UC Cooperative Extension signs.

Directions from Yuba City: Take Hwy 20 west towards Colusa, CA. Turn left onto Sycamore Cutoff Rd., then left on CA-45 S. After 3 miles, turn right onto Dry Slough Rd. After 4 miles, turn right onto Grimes-Arbuckle Rd., the field entrance will be on your left after 3.3 miles. Follow UC Cooperative Extension signs.

